

HOGE HERALD

Hoge Memorial Presbyterian Church

2015

DECEMBER

The Gold Wrapping Paper

Once upon a time, there was a man who worked very hard just to keep food on the table for his family. This particular year a few days before Christmas, he punished his little five-year-old daughter after learning that she had used up the family's only roll of expensive gold wrapping paper.



As money was tight, he became even more upset when on Christmas Eve he saw that the child had used all of the expensive gold paper to decorate one shoebox she had put under the Christmas tree. He also was concerned about where she had gotten money to buy what was in the shoebox.

Nevertheless, the next morning the little girl, filled with excitement, brought the gift box to her father and said, "This is for you, Daddy!"

As he opened the box, the father was embarrassed by his earlier overreaction, now regretting how he had punished her.

But when he opened the shoebox, he found it was empty and again his anger flared. "Don't you know, young lady," he said harshly, "when you give someone a present, there's supposed to be something inside the package!"

The little girl looked up at him with sad tears rolling from her eyes and whispered: "Daddy, it's not empty. I blew kisses into it until it was all full."

The father was crushed. He fell on his knees and put his arms around his precious little girl. He begged her to forgive him for his unnecessary anger.

An accident took the life of the child only a short time later. It is told that the father kept this little gold box by his bed for all the years of his life. Whenever he was discouraged or faced difficult problems, he would open the box, take out an imaginary kiss, and remember the love of this beautiful child who had put it there.

In a very real sense, each of us has been given an invisible golden box filled with unconditional love and kisses from our children, family, friends and God. There is no more precious possession anyone could hold.

Special Announcements

Bulletin information should be in by Wed. at noon—Please no exception
Newsletter information by the 3rd Sunday, December 20th—Please no exception

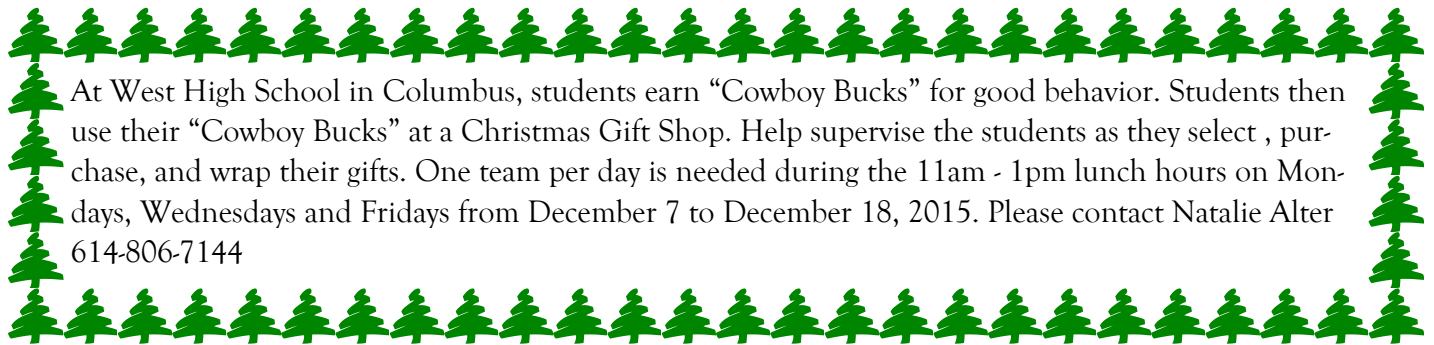
Food Pantry Totals for August 2015: Monthly Totals, 78 Families, People served 267, Adults (60+) 20, Adults (59-18) 139, Children 108

A MESSAGE TO ALL HOGE MEMBERS AND FRIENDS

If you are in need of Pastoral care, contact the church office. Leave a message if no answer.

Check out Hoge's updated Website!! www.hogemempresby.org

We would still like to get to know you better. Fill out the getting to know you forms on the table outside the sanctuary. We would also like to share your favorite recipes. The email address to the church is hogemempresbchurch@gmail.com. Or the information can be left in my file folder, Joy Rector, in the box in the hallway by the secretary's office..



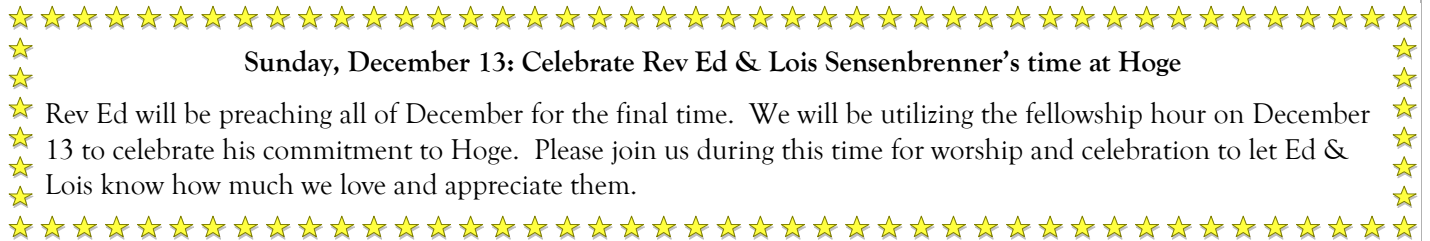
At West High School in Columbus, students earn "Cowboy Bucks" for good behavior. Students then use their "Cowboy Bucks" at a Christmas Gift Shop. Help supervise the students as they select, purchase, and wrap their gifts. One team per day is needed during the 11am - 1pm lunch hours on Mondays, Wednesdays and Fridays from December 7 to December 18, 2015. Please contact Natalie Alter 614-806-7144

If you have not already sent in your 2016 pledge card, please do so as soon as possible.

Year End Tithing Reminder: All tithes brought to the church office or postmarked through December 31 will be recorded as 2015 tithes.

Thank you, Finance & Facilities Committee

January-February The Upper Room now available!!



Sunday, December 13: Celebrate Rev Ed & Lois Sensenbrenner's time at Hoge

Rev Ed will be preaching all of December for the final time. We will be utilizing the fellowship hour on December 13 to celebrate his commitment to Hoge. Please join us during this time for worship and celebration to let Ed & Lois know how much we love and appreciate them.

Out of the Box Community Theatre (OOTBCT)

www.facebook.com/ootbct



OOTBCT (Play Group)—upcoming events: *Bell, Book and Candle*, Friday December 4 and 11, 2015, 8:00pm., Saturday December 5 and 12, 8:00pm and Sunday December 6 and 13, 3:00pm - Becky Curran (Doerr) and Judy Manley are in the performance

It's a Wonderful life: the radio show. Friday December 18, Saturday 19, 2015, 8:00pm and Sunday December 20 3:00pm — Prices are: \$12 general admission; \$10 seniors/students



Lay readers: January Beth Ormsby, February Patty Gorman March-Beth Ormsby, April-Mike Minch, May-Carolyn Colborn, June-Diana Purcell, July-Bill Aiken, August-Gail Garman, September-Carol Ross, October-Mike Minch, November-Beth Ormsby, **December-Donna Swaneck** .

IF YOU CANNOT BE THE LAYREADER FOR THE MONTH, CONTACT BETH ORMSBY

Communion Servers - If you are unable to serve, please try to find a replacement and notify the worship committee.

December 6 - Charlotte Smith, Wilbur Smith, Kay Moore, Beth Ormsby, Natalie Alter, Doug Alter

December 24 (Christmas Eve) - Gail Garman, Carolyn Colborn, Susan Barrett, Patti Gorman, Diane Purcell

January 10-Natalie Alter, Donna Swaneck, Kay Moore, Diane Purcell, Judy Moody, Joy Rector

February 14-Susan Barrett, Jack Neil, Patti Gorman, Fred Mapes, Gary Link, Beth Ormsby

Schedule of Ushers:

If you would like to usher, please contact Gail Garman, Beth Ormsby or Carol Colborn.

Usher Team #1 (Jan, April, July, Oct): Gary Link, Jack Neil, Bev Neil

Usher Team #2 (Feb, May, Aug, Nov): Judy Moody, Mike Minch, Bill & Dorothy Aiken

Usher Team #3 (March, June, Sept, Dec): Jim Cheadle, Diana Purcell, Beth Ormsby

Worship Committee This is the schedule for the fellowship hour on the second Sundays:

January- Finance and Facilities; February- Session; March - Outreach Committee; April- Choir

May- Martha Circle; June - Session ; September- Outreach Committee; October- Martha Circle; November- Deacons;

December- Ushers

No Potlucks on fourth Sunday in July, August, November and December

Thanks to everyone in advance for your help with our fellowships.

Gail Garman, Worship Committee co-chair.

HM3 Gift Cards

Sign up sheets for gift cards for HM3 participants also will be in the Narthex. These are \$5 gift cards to McDonalds, White Castle, Dollar Tree and Ohio Thrift Store. These will be distributed on Saturday December 19th.

**Christmas Eve Candlelight Carol Service
December 24, 2015 at 7:15pm**

All members and friends of Hoge Memorial are invited to attend our beautiful candlelight carol service on Christmas Eve at 7:15pm.

Philip Leston, our wonderful organist will begin the service with a prelude selection of Christmas music on the organ at 7:15pm. At 7:30, our worship continues with the Call to Worship and the Lighting of the Advent Wreath and the Christ Candle. There will be Christmas carols and scripture readings, the Christmas Eve offering, a short meditation by Rev Ed. Sensenbrenner, and a celebration of the Sacrament of Holy Communion.

A highlight of our Christmas Eve Service will be the return of Miss Madeline Owen, who will grace our service with Christmas selections on the harp and the violin. Miss Owen is a 17-year old junior student at Columbus Academy, where she sings in the Academy Viking Choir. She is quite accomplished on both the harp and violin and is a past member of the Columbus Junior Symphony Orchestra. Currently she receives private instruction in Nashville, Tennessee and Columbus, Ohio. This will be the third Christmas Eve we have been privileged to have Miss Owen play for our service.



Miss Madelene Owen

The service closes with the congregation singing by candlelight: “:Away in a manger” and “Silent Night, Holy Night.” Both carols will be introduced by Madelene on the harp and the congregational singing will be accompanied by Phil Leston on the organ.

It will be a beautiful, worshipful way to begin your Christmas celebration of Jesus’ birth. Invite your friends and family members to come to Hoge for our Christmas Ever Service at 7:15pm.

Madelene playing the harp on Christmas Eve



More Announcements

Martha Muses

Our business meeting was instructive. Kay brought the refreshments which some of us enjoyed as the rest of the meeting and lesson progressed. Patty opened our meeting with a report on the mission trip she and Dave Colborn made a couple of weeks ago. It was very interesting and allowed us all a first hand picture of how much that area of the country, Point Peasant New Jersey, still needs help recuperating from that disaster. This report also gave us some insight into what Christians can do to help one another and how much it means to those who have suffered. Our lesson was about Abigail. Gail presented it with thought provoking questions. This series of lessons seem to tie life of biblical times to some events in today's life. Written this way it seems to bring about serious thinking and comparisons. As always there is a standing invitation for any of you who are interested to join us, ladies and gentlemen alike. You are missing out on a valuable touch of spice to your life. It sounds like our next lessons should be interesting and insightful. The more people we have at our meetings the more interesting and helpful we can be. All ideas have merit and deserve our attention. Our next meeting is the meeting that we share the Christmas holiday with each other. It will be December 8 at 6:00pm at the York Steakhouse on West Broad Street. If you plan on attending please call Joy—276-1689 or rectjoyce@sbcglobal.net

KEEP IN DAILY PRAYER

- Jim Rudolph - lungs working at 40% capacity, therefore difficult breathing.
- Dave Colborn recovering from recent fall and eye surgery
- The family of Ed & Robin Wilson - coping with the recent passing of Ed's father, Terry Wilson
- Others:



Richard Borrer, Howard Hicks, Pat Newman, Doug Alter, Marge Kennedy, Pat Borrer, Marianne & Carl Black, Bud & Avis Dorn

The family of Rev. Dick Beidler who passed away on 11/14/15. His Memorial Service will be on 12/13/15 at 2:00 pm, Rushcreek Presbyterian Church. Dick was the director/manager of Geneva Hills for over 30 years.

- Hoge Church: continued support for community-based ministries.
- Our city, nation, and world leaders. Our schools, teachers and children.

Please help keep this list current. Provide the church office with prayer requests for inclusion of "Keep in Daily Prayer" sections of the weekly bulletins and monthly newsletters either by phone or email

New Year, New Opportunity for Hoge!

2016 brings a new year and some changes to Hoge. The session is pleased to announce that a new partnership is being formed with Covenant Presbyterian Church. Pastors and members of Covenant will be working with our congregation to seek stability with preaching, pastoral care along and support for our mission and outreach efforts. They will also become more involved with the Westside Urban Ministry. We welcome this opportunity with excitement. Please be sure to invest the time getting to know them and allow them to know us. They too are excited about this opportunity.

More details will be announced soon but Tracy Keenan and her staff will be around Hoge more often beginning in January. While we are in a time of change, we are encouraged and enthused for our future.

Christmas Joy Offering

Hoge again this year will be participating in the Christmas Joy Offering sponsored by the Presbyterian Church U.S.A. thanks to your gifts, this offering is able to help provide financial assistance to individuals and families that have dedicated their lives to the church (pastors and other retired church workers) and also support racial ethnic education and leadership development for students attending Presbyterian related schools and colleges. This offering will be received on Sunday December 20th.

Christmas Giving Tree

Sign-up sheets will be in the Narthex in December for you to participate in gift giving to Holy Family for children and Franklin Woods for seniors. Gifts are to be wrapped and ID tags attached. Gifts should be at the church by Sunday December 13.

Financial Update – October 31, 2015

The following is a summary of Hoge's current year financial activity through October 2015. Detailed financial reports are available by request to the church office.

Balances as of October 31, 2015:

Unrestricted cash	\$ 22,334.85
Restricted cash	11,564.24
Payroll Liabilities	<u>(145.15)</u>
Net liquid assets	\$ 33,653.94

Operating Income:

Contributions	\$ 59,753.35
Interest	172.22
Other income (building use)	5,741.00
Other income (other support)	4,717.22
Other income (flower dedications)	<u>897.00</u>
Total Operating Income	\$ 71,280.79

Operating Expenses:

Admin & Other Expenses	\$ 9,059.96
Building & Maintenance Exp	2,718.12
Committee Expenses	6,986.64 (includes Outreach activities)
Office Expenses	3,603.43
Non-Pastoral salaries	32,284.34
Pastoral Expenses	7,709.02
Utilities and Phone	<u>14,690.29</u>
Total Operating Expenses	\$ 77,051.80
Difference - Operating Activity	\$ (5,771.01)

Designated Offerings / Donations during 2015:

Deacon's Funds: \$5,930.14 (includes donations from Worthington Presbyterian, Glenwood UM Church)

One Great Hour of Sharing: \$1,515.26

Peacemaking Offering: \$395.00

Parking Lot/Building Maintenance Fund: \$4.14 (interest earned from designated savings account)

General Building Improvements Funds: \$1,228.01 (spent on new dehumidifiers)

Technology Upgrade: \$7,100.00

Memorial Funds: \$1,580.00 (utilized for Flat Roof)

Flat Roof Funds: \$20,450.00

HM3 Support: \$445.00 (donations from Westminster Presbyterian)

Financial notes:

We continue to evaluate each of our administrative and operating expenses while making attempts to cut where possible. Please consider volunteering to help with coverage and related responsibilities of the office. These volunteer efforts bring needed relief to our financial position. Please know that your service to God and this community is greatly appreciated. The members of Personnel, F&F and session thank you for your willingness to accommodate this need. Keeping Hoge functioning administratively is as important as keeping it functioning for ministry and outreach.

A new freezer was donated for use in the kitchen by Dave & Carolyn Colborn. Our outside doors have been refinished along with replacement metal plates on some of the doors by Mike Purcell and Jack Neil. Our exhaust fan in the kitchen has been fixed by Fred Mapes. Thank you for this special support for our facility. We also are having a new AA group meeting daily at Hoge. This group will meet every day of the year and primarily utilize the kitchenette during from 11:30 am - 1:30 pm.

If you are not currently participating in any of the activities at Hoge, please prayerfully consider your willingness to do so. We have unique mission and outreach occurring here which is not happening anywhere else. You have to experience it to understand it!

God is calling each of us to do our part to keep Hoge alive, providing mission and outreach to our community. Please consider your prayerful, physical, and financial support during 2015 and for Hoge's future.


Patti Gorman, Treasurer

Reminder: Please have all information in to the secretary by the 3rd Sunday to be placed in the next month's newsletter.

DECEMBER

SUNDAY	MONDAY	TUESDAY
		1 12:00pm AA Meeting 2 5:30pm AA Meeting 7:00pm Worship/Outreach
6 10:30 Worship and Communion w/ Rev. Ed Sensenbrenner 12:00on AA Meeting 7:00pm AA Meeting	7 12:00pm AA Meeting 6:00pm Girl Scouts	8 12:00pm AA Meeting 6:00pm Martha Circle at York Steak House 5:30pm AA Meeting
13 10:30am Worship w/ Ed Sensenbrenner 11:30am Fellowship Hour 12:00pm AA Meeting 2:00pm Piano Recital in the Parlor 3:00pm Bell, Book and Candle Play 7:00pm AA Meeting	14 12:00pm AA Meeting 6:00pm Girl Scouts	15 12:00pm AA Meeting 5:30pm AA Meeting
20 10:30am Worship w/Rev. Ed Sensenbrenner 12:00pm AA Meeting 3:00pm It's A Wonderful Life Play 6:00pm Birthday Party for Jesus 7:00pm AA Meeting	21 12:00pm AA Meeting 6:00pm Girl Scouts 7:00pm Session Meeting	22 12:00pm AA Meeting 12:00pm Food Pantry 5:30pm AA Meeting
27 10:30am Worship w/Rev. Ed Sensenbrenner 12:00pm AA Meeting 7:00pm AA Meeting	28 12:00pm AA Meeting 6:00pm Girl Scouts Office Closed	29 12:00pm AA Meeting 12:00pm Food Pantry 5:30pm AA

2015

WEDNESDAY	THURSDAY	FRIDAY	SATURDAY
02 12:00on AA Meeting 7:30pm NA Meeting 7:30pm Choir Practice	3 12:00pm AA Meeting 2:00pm Medical Bus	4 12:00pm AA Meeting 8:00pm Bell, Book and Candle Play	05 12:00pm AA Meeting 5:00pm HM ³ / children 7:00pm AA Meeting 8:00pm Bell, Book and Candle Play
9 12:00pm AA Meeting 7:30pm NA Meeting	10 12:00pm AA Meeting 2:00pm Medical Bus	4 12:00pm AA Meeting 8:00pm Bell, Book and Candle Play	12 12:00pm AA Meeting 5:00pm HM ³ / children 7:00pm AA Meeting 8:00pm Bell, Book and Candle Play
16 12:00pm AA Meeting 7:30pm NA Meeting 7:30pm Choir Practice	17 12:00pm AA Meeting 2:00pm Medical Bus 7:00pm G.S. Leader Mtg.	4 12:00pm AA Meeting 8:00pm It's a Wonderful Life Play	19 12:00pm AA Meeting 5:00pm HM ³ / children 7:00pm AA Meeting 8:00pm I's A Wonderful Live Play
23 12:00pm AA Meeting 12:00pm Food Pantry 7:30pm NA Meeting	24 12:00pm AA Meeting No Medical Bus 7:15pm Christmas Eve Services w/ Rev. Ed Sensenbrenner	25  Office Closed	26 12:00pm AA Meeting 5:00pm HM ³ / children 7:00pm AA Meeting
30 12:00pm AA Meeting 12:00pm Food Pantry 7:30pm NA Meeting	31 12:00pm AA Meeting No Medical bus <i>New Years Eve</i>		

HOGE MEMORIAL PRESBYTERIAN CHURCH
 2930 WEST BROAD STREET
 COLUMBUS, OHIO 43204
 PHONE: 614-276-5433
 FAX: 614-276-5434
 EMAIL: HOGEMEMPRESBCHURCH@GMAIL.COM

December 2015

Inside this issue:

- 1 Food For Thought
- 2 Special Announcements
- 3 Mark Your Calendar
- 4 More Announcements
- 5 Financials
- 6 & 7 Calendar of Events
- 8 Staff/Contact Information

*Feeding the Community
 Physically &*

GOT MAIL ??

- Elders and Deacons -

If you have a folder in the roll-away mailbox near the office upstairs, please be sure to check it each Sunday for new mail and announcements.

